

LOOK OUT FOR

Currant-lettuce aphid

Nasonovia ribisnigri (Mosley)



Above: Winged lettuce aphid

Photo: UC Cooperative Extension, Monterey County, Lynn Wunderlich

What is it?

Originated in northern Europe, the currant-lettuce aphid is considered to be a major pest of salad crops, particularly lettuces.

In general, the direct damage from the aphid is limited on lettuces, though large numbers of aphids may stunt young plants and cause leaves to become pale in colour and slightly deformed.

A more serious consequence of infestation of lettuce heads by aphids is that they are unsaleable. Currant-lettuce aphid can be a vector of cucumber mosaic virus and lettuce mosaic virus.

Where did it come from?

Europe (Belgium, France, Germany, Greece, Italy, Netherlands, Poland, Russian Federation, Switzerland, United Kingdom), North America (Canada, United States of America), South America (Argentina), New Zealand and Tasmania. For more information about the aphid in New Zealand visit: www.aphidwatch.com

Hosts

Lettuce (*Lactuca sativa*), *Ribes* (gooseberry; and red, black and white currants), chicory, nipplewort (*Lampsana*), Hawkweed (*Crepis*), *Hieracium*, Speedwell (*Veronica*), Tobacco and Petunia. In NZ, Hawkweed and *Hieracium* are heavily colonized.

Symptoms

Lettuce aphids prefer to feed on new leaves deep inside the plant. Aphids feeding deep in the plant may be orange or red, whereas those feeding on outer leaves may be green.

For more information about the aphid and to see images of the pest, please visit the following sites:

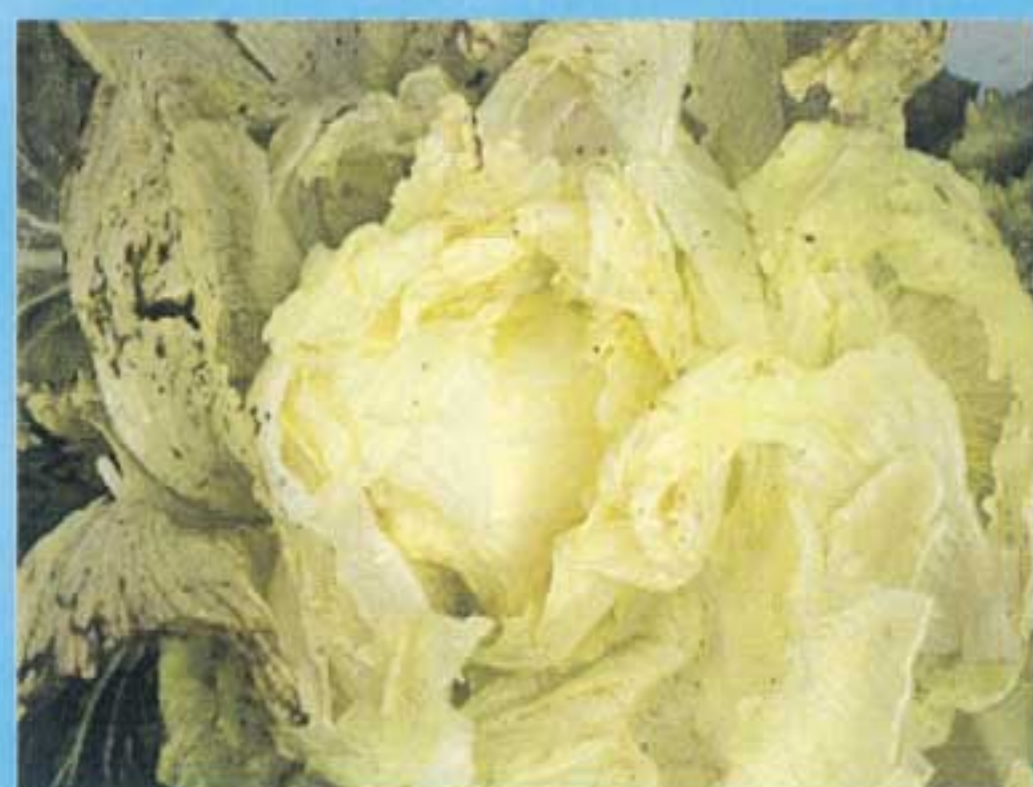
- <http://www.aphidwatch.com>
- <http://ccvipmp.ucdavis.edu/insects/lettuceaphid.html>
- <http://cipm.ncsu.edu/CropProfiles/docs/Azradicchio.html>
- <http://www.inra.fr/Internet/Produits/HYPPZ/RAVAGEUR/6nasrib.htm>

MORE INFORMATION



Wingless lettuce aphid

Photo: DPIWE Tasmania



Infestation in lettuce head

Photo: UC Cooperative Extension
Monterey County
Lynn Wunderlich



Aphid on lettuce leaf
Photo: DPIWE Tasmania

Spread

Dispersal of aphids is mainly by winged adults. These winged adult aphids can be dispersed widely by wind.

The potential for aphid spread is considered high, particularly when high numbers of winged adults are found within colonies.

Spread can also be via infected produce, as aphids are small and tend to attack and live in innermost leaves of lettuce, making them difficult to detect and control with sprays.

Management

Infested production areas and produce are currently subject to quarantine restrictions.

Investigations are continuing to determine if eradication of the pest is possible. Ranges of other management options are also being investigated.

Swift action by industry in the early identification of the pest has greatly assisted in this regard.

Contact

Contact your local department of agriculture or primary industry immediately by calling the Exotic Plant Pest Hotline 1800 084 881.

If you find suspect aphids, mark the collection site in some way so it can be found easily later and call the exotic plant pest hotline.

Report suspect detections to your local department of agriculture or primary industry, call the

EXOTIC PLANT PEST HOTLINE

1800 084 881

For more information:

www.planthealthaustralia.com.au/pesth hotline

SUPPORTED BY:

Queensland
Department of Primary Industries and Fisheries

South Australia
Primary Industries and Resources South Australia

New South Wales
NSW Agriculture

Australian Capital Territory
Environment ACT

Victoria
Department of Primary Industries

Tasmania
Department of Primary Industries, Water and the Environment

Western Australia
Department of Agriculture Western Australia

Northern Territory
Department of Business, Industry and Resource Development

Industry

AUSVEG
www.ausveg.com.au

Prepared by:
The Consultative Committee on Exotic Plant Pest and Diseases on the Curren-Lettuce Aphid.



Inspecting lettuce
Photo: DPIWE Tasmania



Australian Government

Department of Agriculture, Fisheries and Forestry
Product Integrity, Animal and Plant Health

Disclaimer: The material in this publication was prepared from the most up-to-date information available at the time of publication. It is intended as a guide only and the publisher accepts no responsibility for errors.